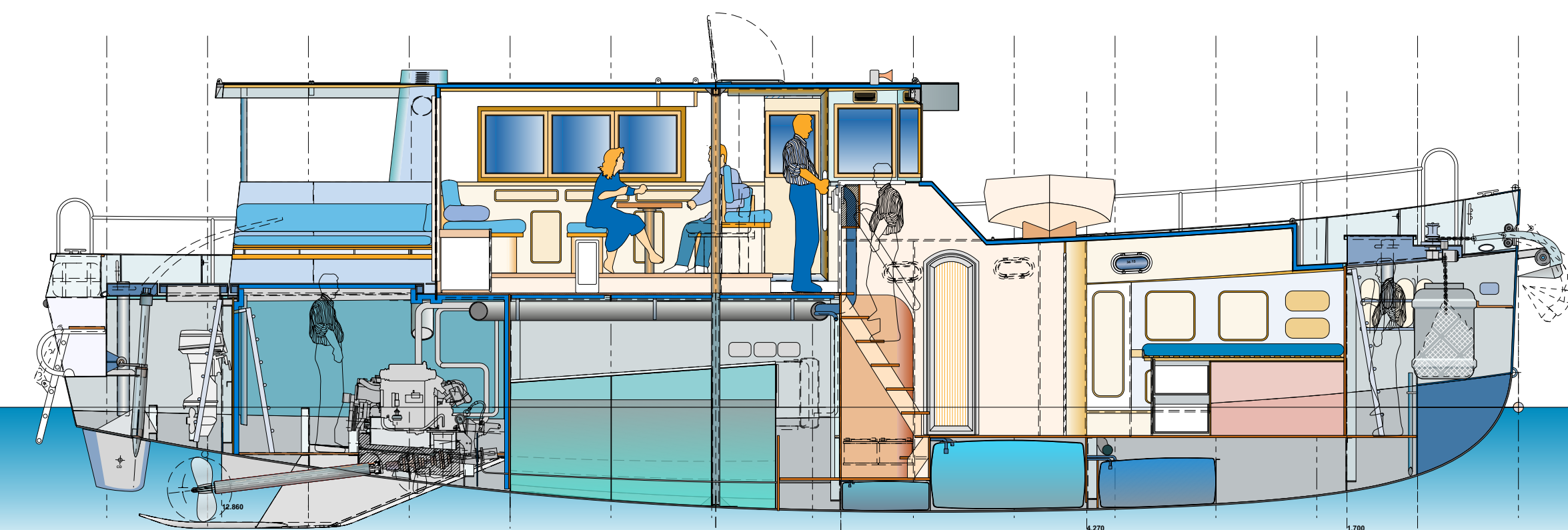
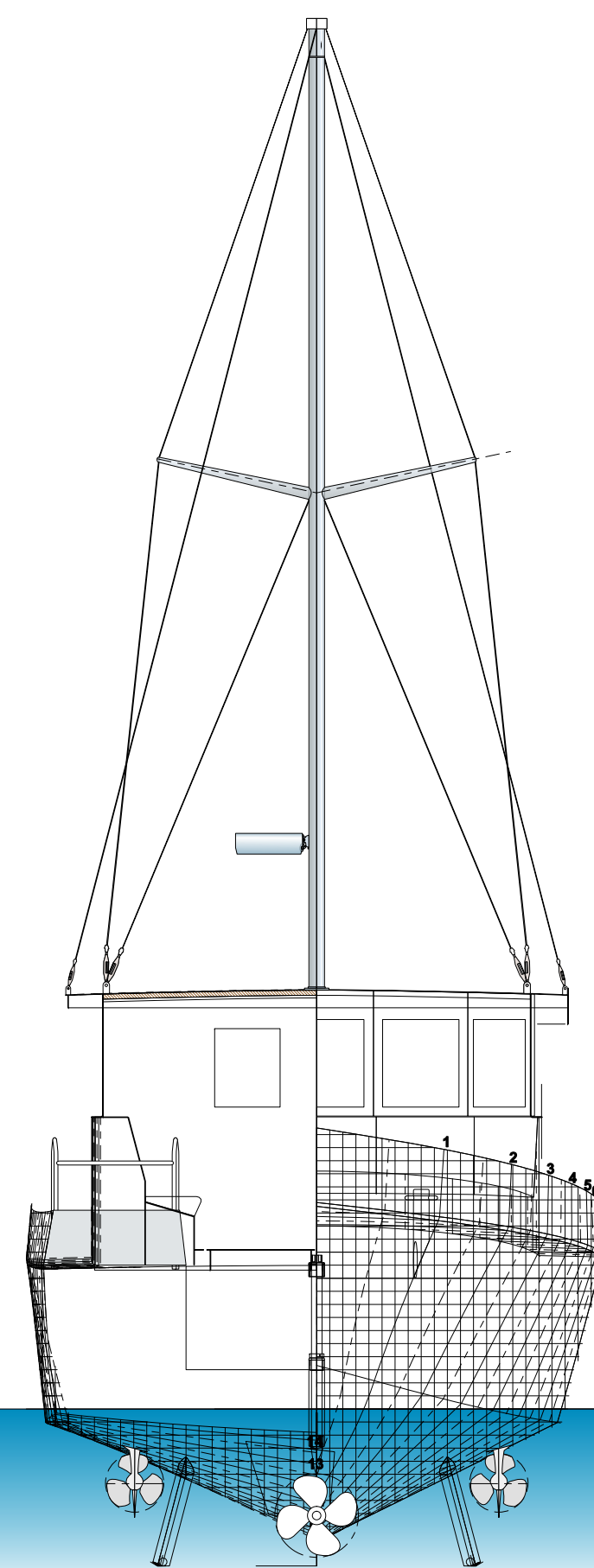
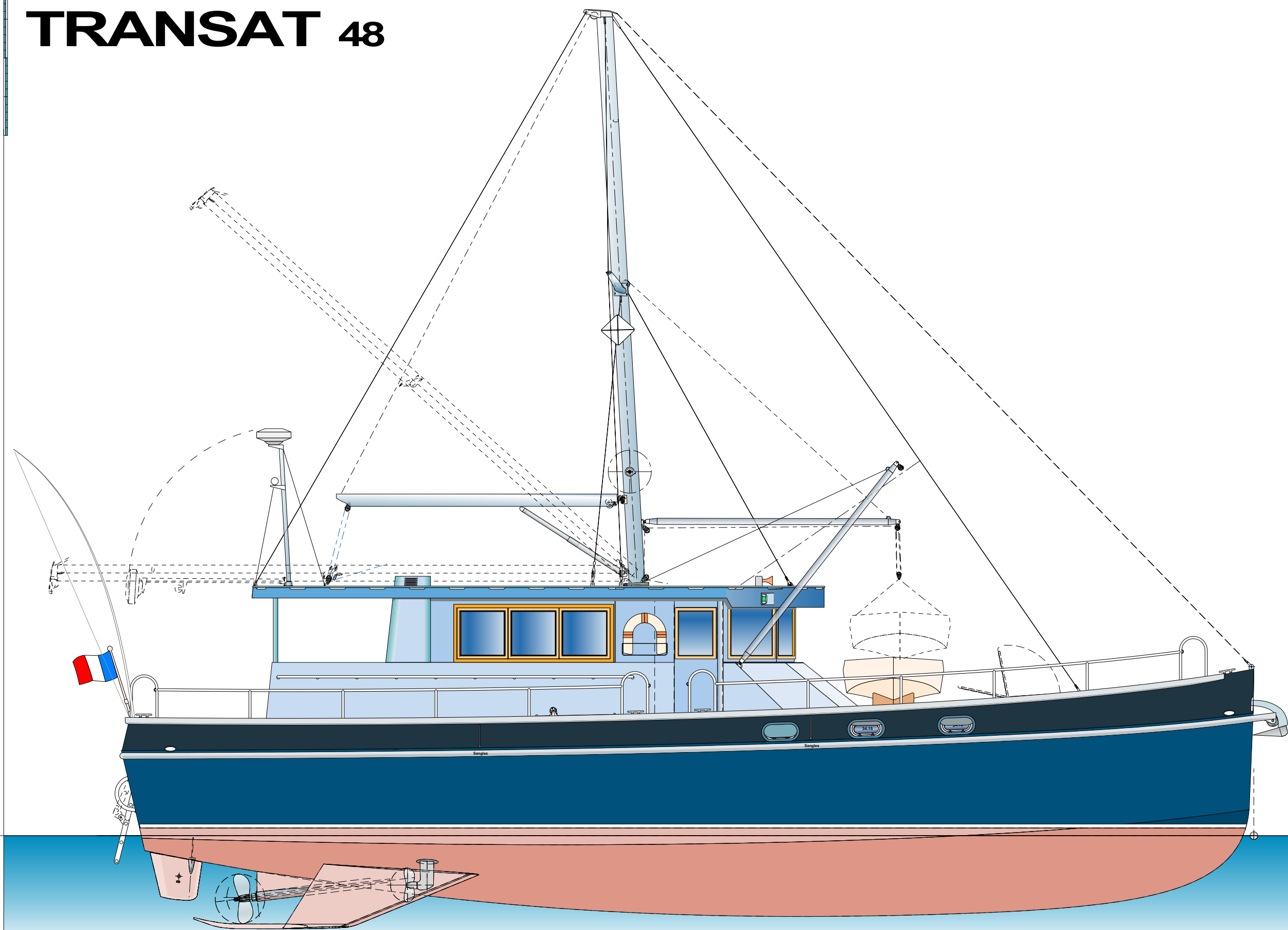


TRANSAT 48



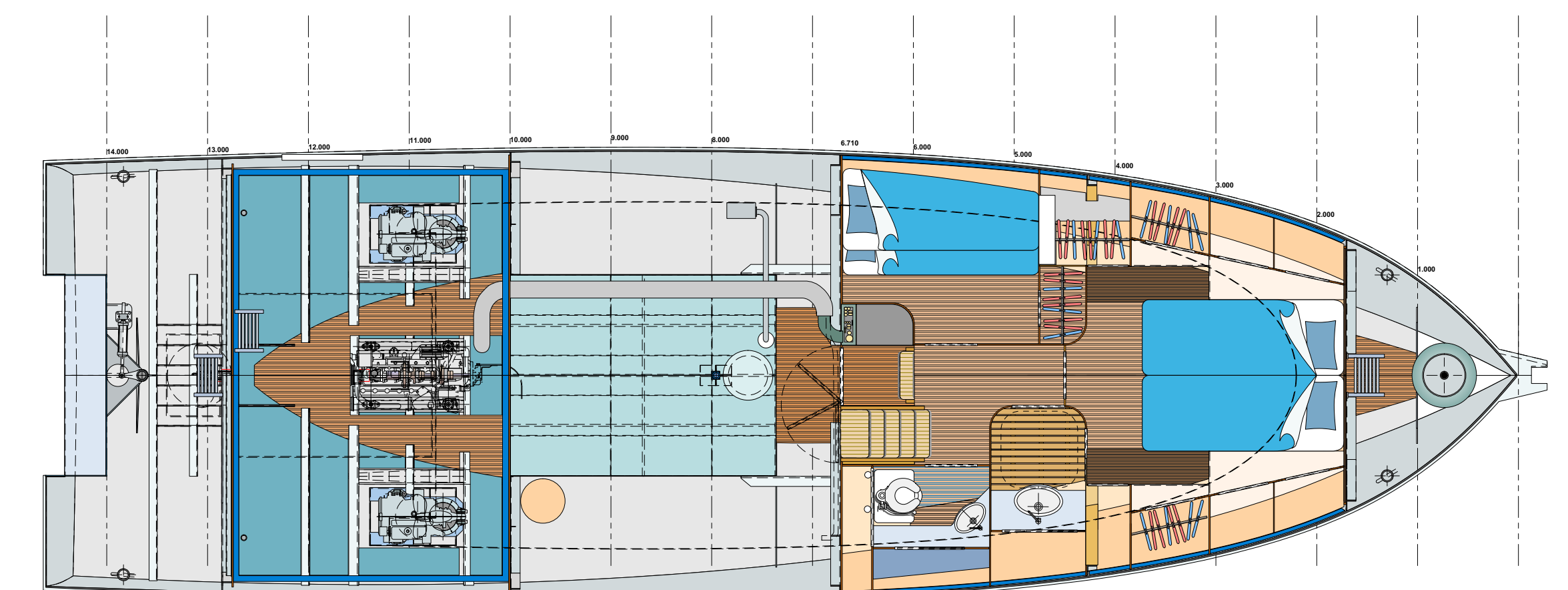
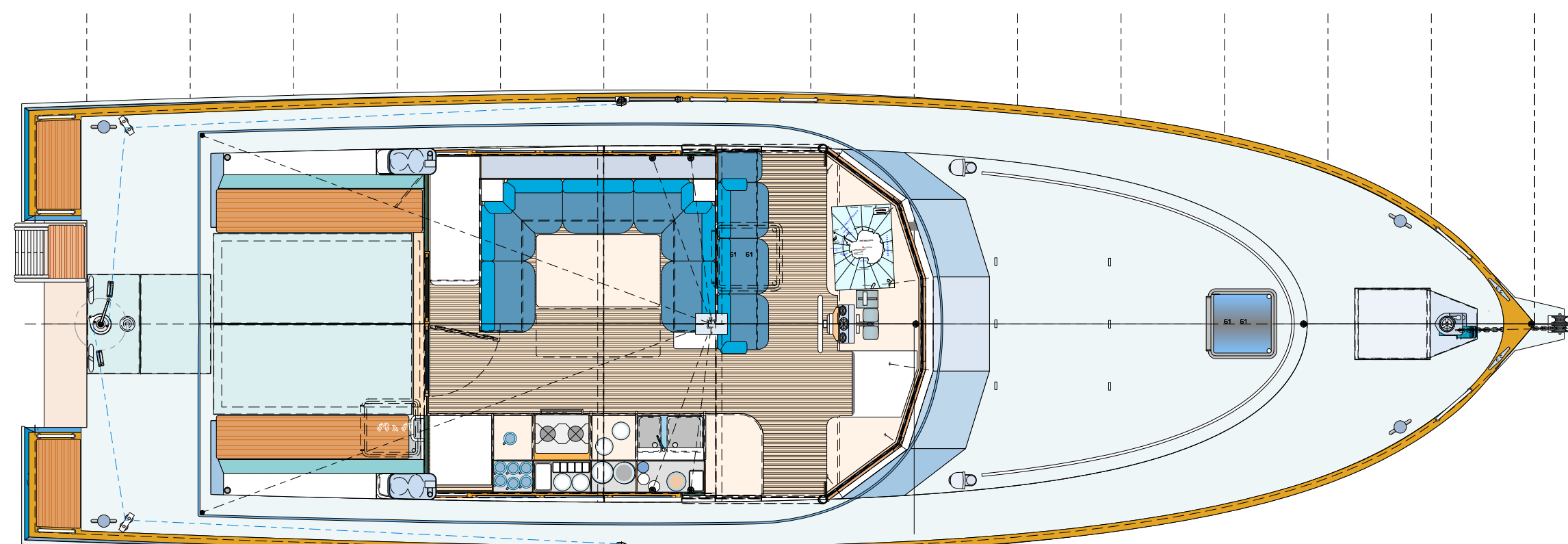
Longueur de coque = 14m60
 Longueur Flottaison = 14m15
 Largeur hors tout = 4m 50
 Largeur Flottaison = 4m 15

Tirant d'eau = 1m 20
 Déplacement "en charge" = 20 T00
 Déplacement maximum = 22 T00

Lest : réservoir GO + eau = 5000 litres
 BMT = 2.22
 GMT = 1.49

Puissance moteur = 150 + 40 + 40 cv

Grand voile = 12 m² 00
 Foc lourd = 23 m² 00
 Génois léger = 33 m² 00



<p>Présentation Plan n° 01 P 101 Le 04 / 08 / 01</p>	<p>TRANSAT 48 Copyright : J.-P. Brouns Plan modifié le 20 / 09 / 01</p>	<p>Jean-Pierre Brouns Bureau d'architecture navale F - 07110 JOANNAS Tél. : 04 75 88 30 75 Fax : 04 75 88 30 70</p>
---	--	--

Echelle : 1/50^{ème}